

Approved by the Board of Supervisors of the Township of Cranberry by
 Resolution No. _____ dated _____ 2011
 Mayor _____

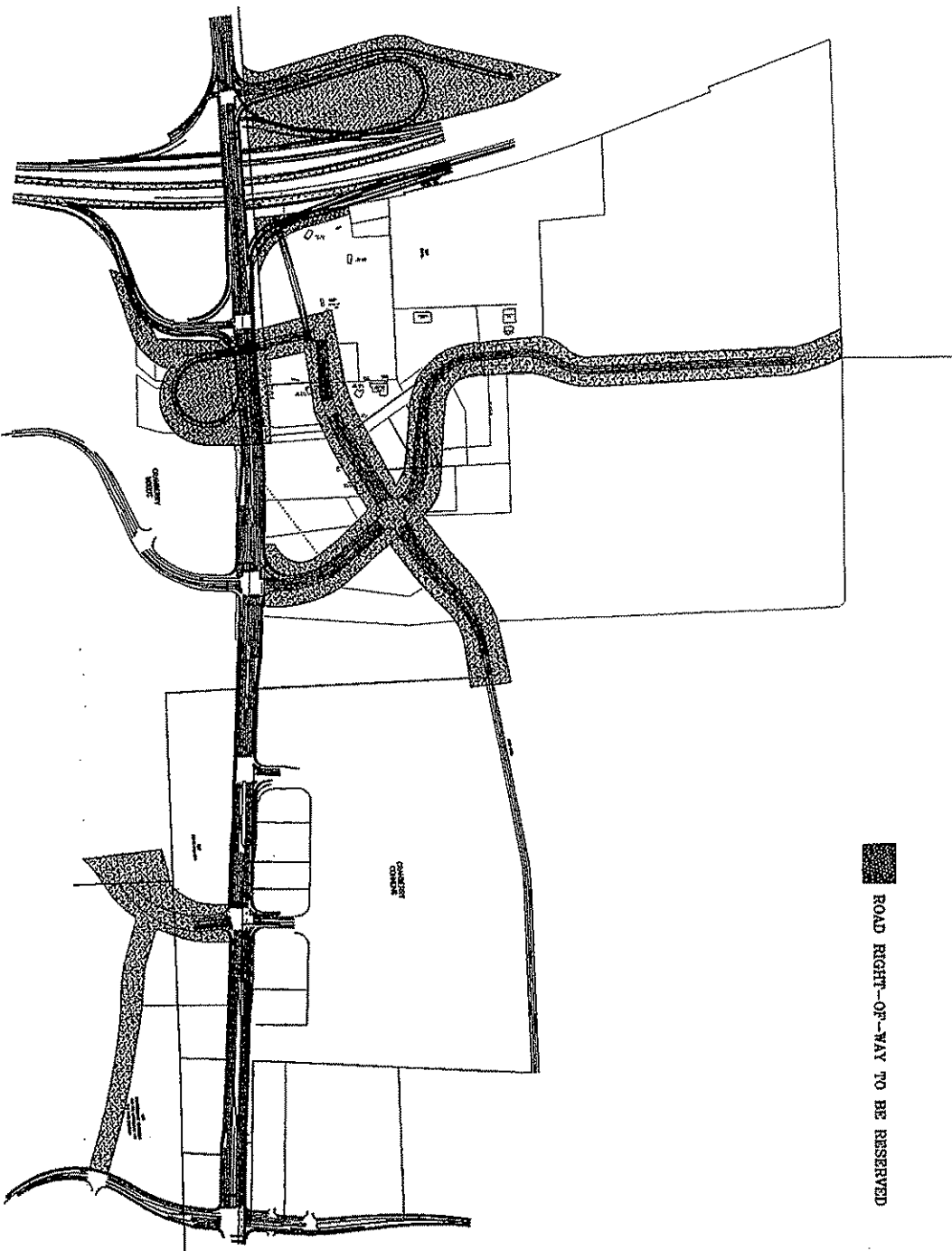
Recorded in the office of the Recorder of Deeds of the County of Butler
 Commonwealth of Pennsylvania, in Book Volume _____ Page(s)
 Date under my hand and seal this _____ day of _____ 2011
 Recorder of Deeds _____

Approved by the Planning Commission of the Township of Cranberry, this
 _____ day of _____ 2011
 Secretary _____

Engineered by the Butler County Planning Commission on this _____ day of
 _____ 2011
 Secretary _____

* This official map is an amended official map for the Butler and
 Cranberry townships as amended in 2009 in Plan Book 277 Page 22.

- UNLAWFUL
- CHANGING PURPOSE
- FUTURE CONSIDERATION
- REVISION OF ZONING



DATE	DESCRIPTION
NOV 15 2011	ADOPTED
NOV 15 2011	ADOPTED
NOV 15 2011	ADOPTED
NOV 15 2011	ADOPTED
NOV 15 2011	ADOPTED
NOV 15 2011	ADOPTED
NOV 15 2011	ADOPTED

OFFICIAL MAP
 ROUTE 228 CORRIDOR
 SHEET #1
 CRANBERRY TOWNSHIP
 BUTLER COUNTY PENNSYLVANIA