

Harris Township Official Map



Dr. John P. Higgins | Planning & Zoning
300 S. Main St., Suite 200
Boalsburg, PA 16817
Phone: 814.325.3800
Fax: 814.325.3802

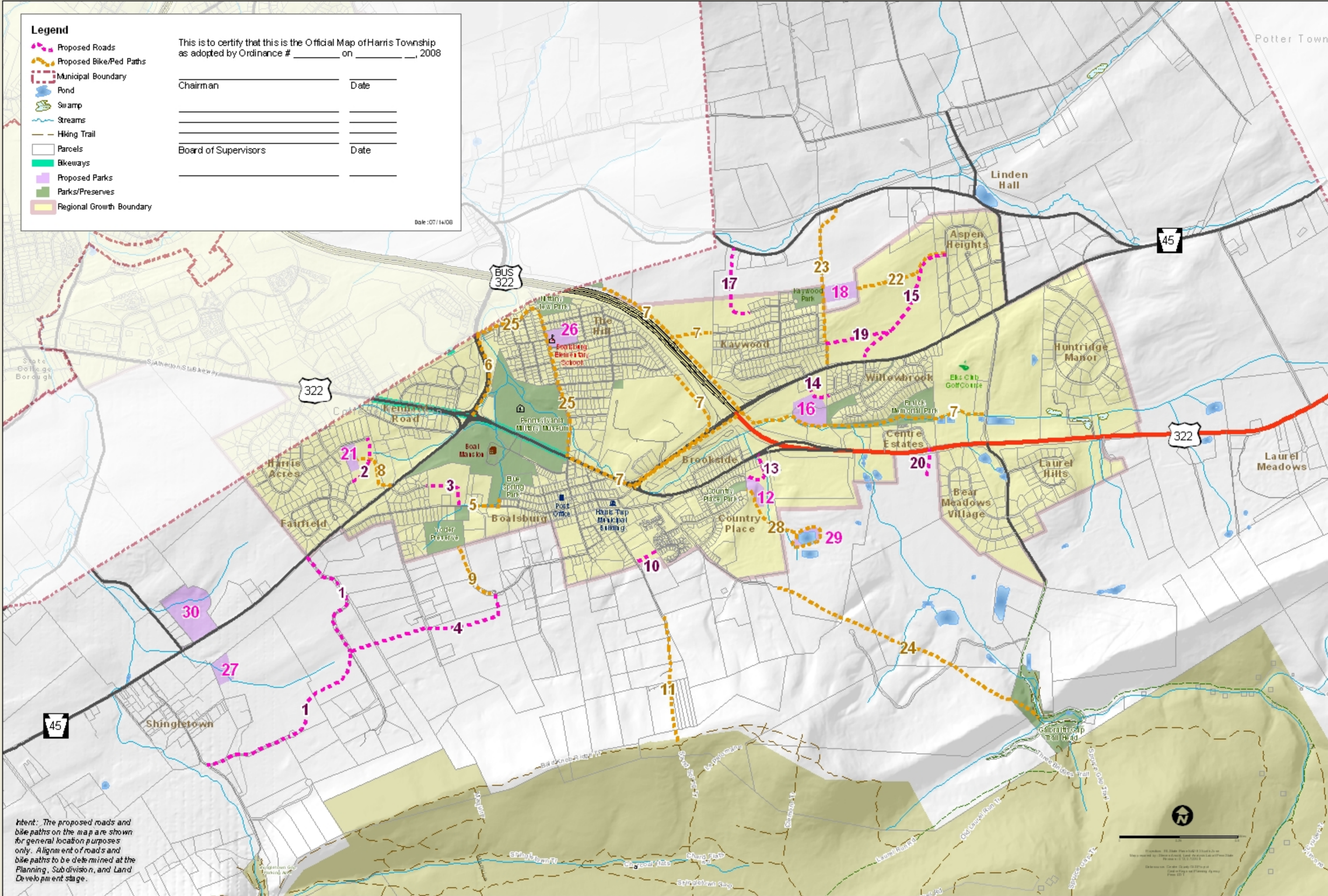
- Legend**
- Proposed Roads
 - Proposed Bike/Ped Paths
 - Municipal Boundary
 - Pond
 - Swamp
 - Streams
 - Hiking Trail
 - Parcels
 - Bikeways
 - Proposed Parks
 - Parks/Preserves
 - Regional Growth Boundary

This is to certify that this is the Official Map of Harris Township as adopted by Ordinance # _____ on _____, 2008

Chairman _____ Date _____

 Board of Supervisors _____ Date _____

Date: 07/14/08



Intent: The proposed roads and bike paths on the map are shown for general location purposes only. Alignment of roads and bike paths to be determined at the Planning, Subdivision, and Land Development stage.



Scale: 1" = 1000'
 Date: 07/14/08
 Prepared by: Planning & Zoning