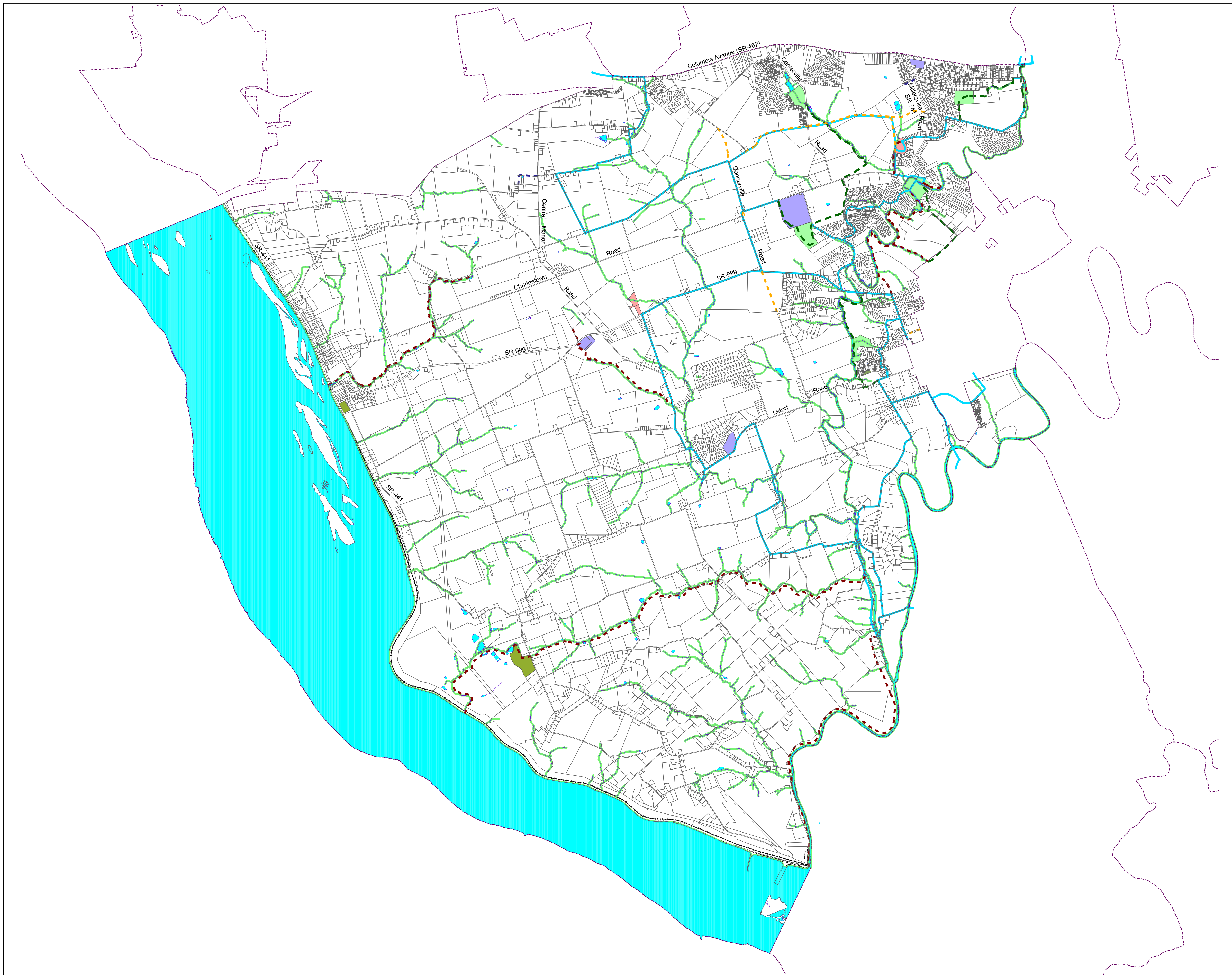
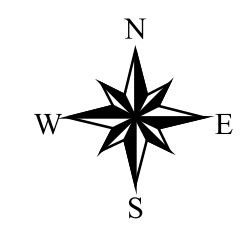


Manor Township,
Lancaster County, PA

OFFICIAL MAP



- Proposed Roadways
 - Proposed Collector
 - Proposed Local
- Bikeways and Trails
 - Pedestrian Trail - Existing
 - Pedestrian Trail - Proposed
 - Pedestrian/Bikeway - Existing
 - Pedestrian/Bikeway - Proposed
 - Proposed Street Widening/Marking to Accommodate Bicycles
 - Proposed Resource Conservation Easement
- Parks and Public Land
 - Township Facility
 - Township Owned Parks and Open Space
 - Township Leased Park
 - Other Publicly Owned Open Space Lands
 - School District Facility
 - Privately Owned Parks



2500 0 2500 Feet

Adopted: October 4, 1999

Source: Lancaster County GIS Landbase

RETTEW
ASSOCIATES INC.

H:\97\97149801\GIS_Data\manortwp.apr. d size Official Map
H:\ENGSER\Common\Municipal Ordinances\Retnew Ordinances\Manor Twp\Official Map.pdf