

- LEGEND**
- WATERCOURSES
SOURCE: TOWNSHIP BASE PLAN
 - PENNSYLVANIA HIGHLANDS GREENWAY AND SAUCON CREEK GREENWAY
SOURCE: UNITED STATES DEPARTMENT OF AGRICULTURE FOREST SERVICE'S PENNSYLVANIA HIGHLANDS REGIONAL STUDY
 - CARBONATE GEOLOGY
SOURCE: UPPER SAUCON TOWNSHIP ZONING ORDINANCE, NATURAL & CULTURAL FEATURES MAP
 - WOODLANDS
SOURCE: LEHIGH VALLEY PLANNING COMMISSION GIS DATA
 - WETLANDS
SOURCE: LEHIGH VALLEY PLANNING COMMISSION GIS DATA (AS CLASSIFIED BY THE U.S. FISH AND WILDLIFE SERVICE AND DEFINED IN THE NATIONAL WETLANDS INVENTORY)
 - 100 YEAR FLOODPLAIN
SOURCE: FEDERAL EMERGENCY MANAGEMENT AGENCY (FEMA), FLOOD INSURANCE RATE MAPS, LEHIGH COUNTY, PENNSYLVANIA, REVISED JULY 16, 2004. THE LIMITS OF THE FEMA IDENTIFIED 100-YEAR FLOODPLAIN AS SHOWN MAY HAVE BEEN MODIFIED BY DEVELOPMENT AND ARE NOT ATTEMPTED TO BE REFLECTED ON THIS PLAN. THE ACTUAL LOCATIONS OF THE 100 YEAR FLOODPLAIN AREAS - INCLUDING AS REFLECTED IN THE MOST CURRENT FEMA-MONITORED STUDIES - ALONG ALL WATERCOURSES, DRAINAGEWAYS, ETC. MUST BE IDENTIFIED ON A CASE BY CASE BASIS.

NOTES:

1. THE LOCATIONS OF ALL FEATURES IDENTIFIED IN THE LEGEND (WATERCOURSES, WETLANDS, 100 YEAR FLOODPLAIN, ETC.) ARE PROVIDED FOR GENERAL INFORMATION ONLY. ACTUAL LOCATIONS, WHICH MAY VARY BASED ON FIELD CONDITIONS, MUST BE IDENTIFIED ON A CASE BY CASE BASIS, AND MAY BE MORE EXTENSIVE THAN AS SHOWN.
2. THE SAUCON CREEK GREENWAY IS A MIXTURE OF RESIDENTIAL AND INDUSTRIAL DEVELOPMENT, FARMLAND, PARKLAND AND GOLF COURSES. AGRICULTURAL CONSERVATION EASEMENTS HAVE BEEN PURCHASED ON SEVERAL FARMS WITHIN OR ADJACENT TO THE SAUCON CREEK IN UPPER SAUCON TOWNSHIP. MANY OTHER FARMS IN THIS AREA ARE ELIGIBLE FOR ACQUISITION.
3. INFORMATION INCLUDED ON THIS PLAN IS FOR GENERAL REFERENCE ONLY. UPPER SAUCON TOWNSHIP AND THE PIDCOCK COMPANY DO NOT GUARANTEE THE ACCURACY OF THE INFORMATION SHOWN AND RECOMMEND THAT IT BE CHECKED FOR ACCURACY BY THE USER.
4. BASE PLAN IS MAP FROM KEYSTONE CONSULTING ENGINEERS, INC. DATED 09-28-93.

UPPER SAUCON TOWNSHIP
LEHIGH COUNTY, PENNSYLVANIA
OFFICIAL MAP - COMPONENT 1
EXISTING ENVIRONMENTAL FEATURES

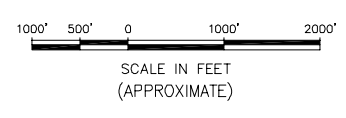
THE PIDCOCK COMPANY
CIVIL ENGINEERING AND LAND PLANNING ARCHITECTURE LAND SURVEYING

OXFORD DRIVE AT FISH HATCHERY ROAD
ALLENTOWN, PENNSYLVANIA

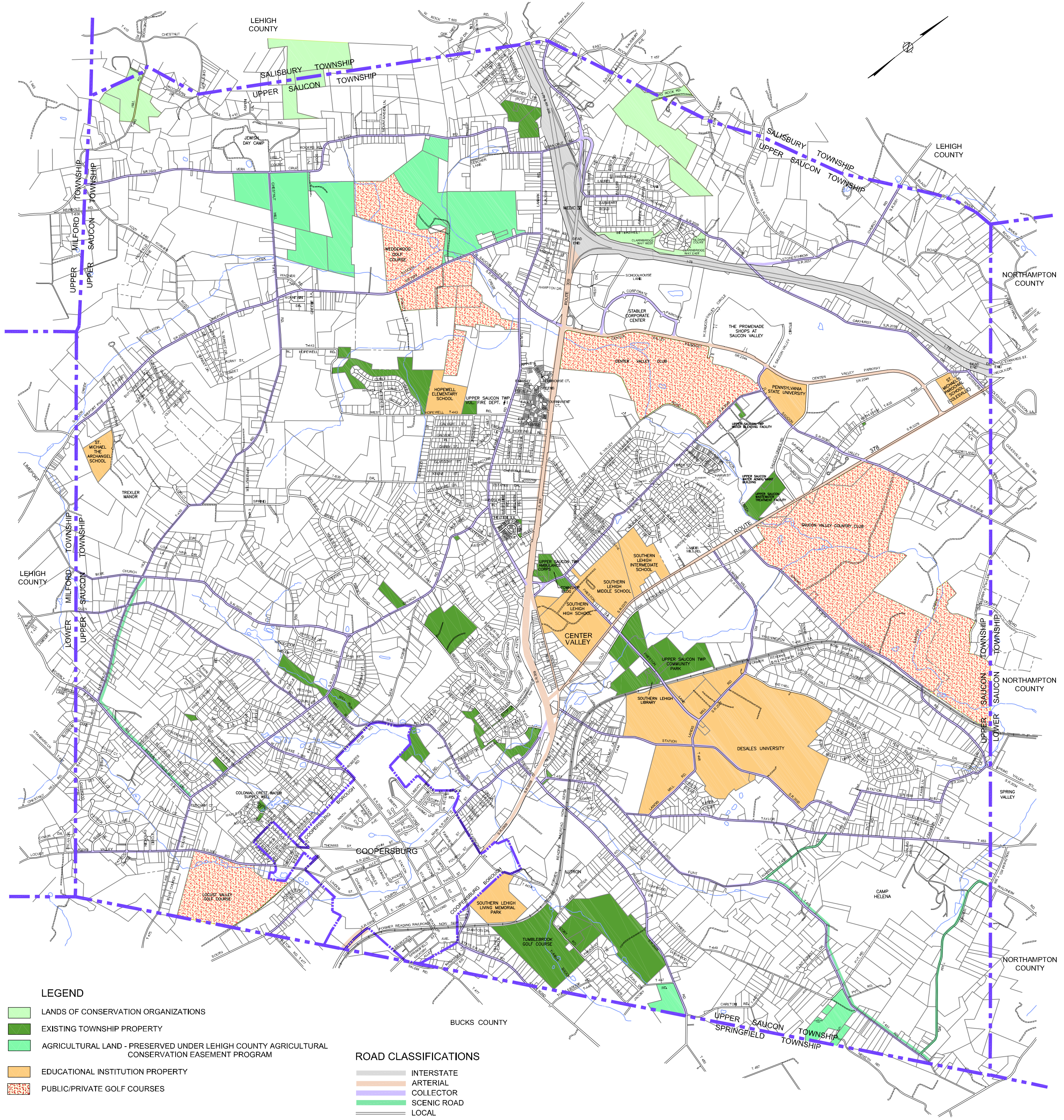
OCTOBER 27, 2009

THIS IS TO CERTIFY THAT THIS IS THE OFFICIAL MAP OF UPPER SAUCON TOWNSHIP REFERRED TO IN THE OFFICIAL MAP ORDINANCE OF UPPER SAUCON TOWNSHIP, LEHIGH COUNTY, PENNSYLVANIA, ON THE _____ DAY OF _____, 2009

CHAIRMAN _____ SECRETARY _____



Drawing name: S:\Upper Saucon\Township\UST-MAPS\OFFICIAL MAPS\UST-36.1 OF 3.dwg Date Modified: Oct 27, 2009 9:15:00am



LEGEND

- LANDS OF CONSERVATION ORGANIZATIONS
- EXISTING TOWNSHIP PROPERTY
- AGRICULTURAL LAND - PRESERVED UNDER LEHIGH COUNTY AGRICULTURAL CONSERVATION EASEMENT PROGRAM
- EDUCATIONAL INSTITUTION PROPERTY
- PUBLIC/PRIVATE GOLF COURSES

ROAD CLASSIFICATIONS

- INTERSTATE
- ARTERIAL
- COLLECTOR
- SCENIC ROAD
- LOCAL

NOTES:

1. INFORMATION INCLUDED ON THIS PLAN IS FOR GENERAL REFERENCE ONLY. UPPER SAUCON TOWNSHIP AND THE PIDCOCK COMPANY DO NOT GUARANTEE THE ACCURACY OF THE INFORMATION SHOWN AND RECOMMEND THAT IT BE CHECKED FOR ACCURACY BY THE USER.
2. THE LOCATIONS OF THE PROPOSED RECREATION PATH AND FUTURE ROAD EXTENSIONS ARE CONCEPTUAL ONLY AND FOR PLANNING PURPOSES. ACTUAL LOCATIONS MUST BE IDENTIFIED BY THE TOWNSHIP ON A CASE BY CASE BASIS.
3. BASE PLAN IS MAP FROM KEYSTONE CONSULTING ENGINEERS, INC. DATED 09-28-93.

UPPER SAUCON TOWNSHIP
LEHIGH COUNTY, PENNSYLVANIA
OFFICIAL MAP - COMPONENT 2
EXISTING PARKS, CONSERVATION LANDS AND
TRANSPORTATION FACILITIES

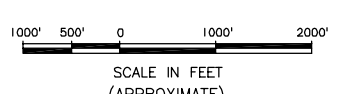
THE PIDCOCK COMPANY
CIVIL ENGINEERING AND LAND PLANNING ARCHITECTURE LAND SURVEYING
OXFORD DRIVE AT FISH HATCHERY ROAD
ALLENTOWN, PENNSYLVANIA

OCTOBER 27, 2009

THIS IS TO CERTIFY THAT THIS IS THE OFFICIAL MAP OF UPPER SAUCON TOWNSHIP REFERRED TO IN THE OFFICIAL MAP ORDINANCE OF UPPER SAUCON TOWNSHIP, LEHIGH COUNTY, PENNSYLVANIA, ON THE _____ DAY OF _____, 2009

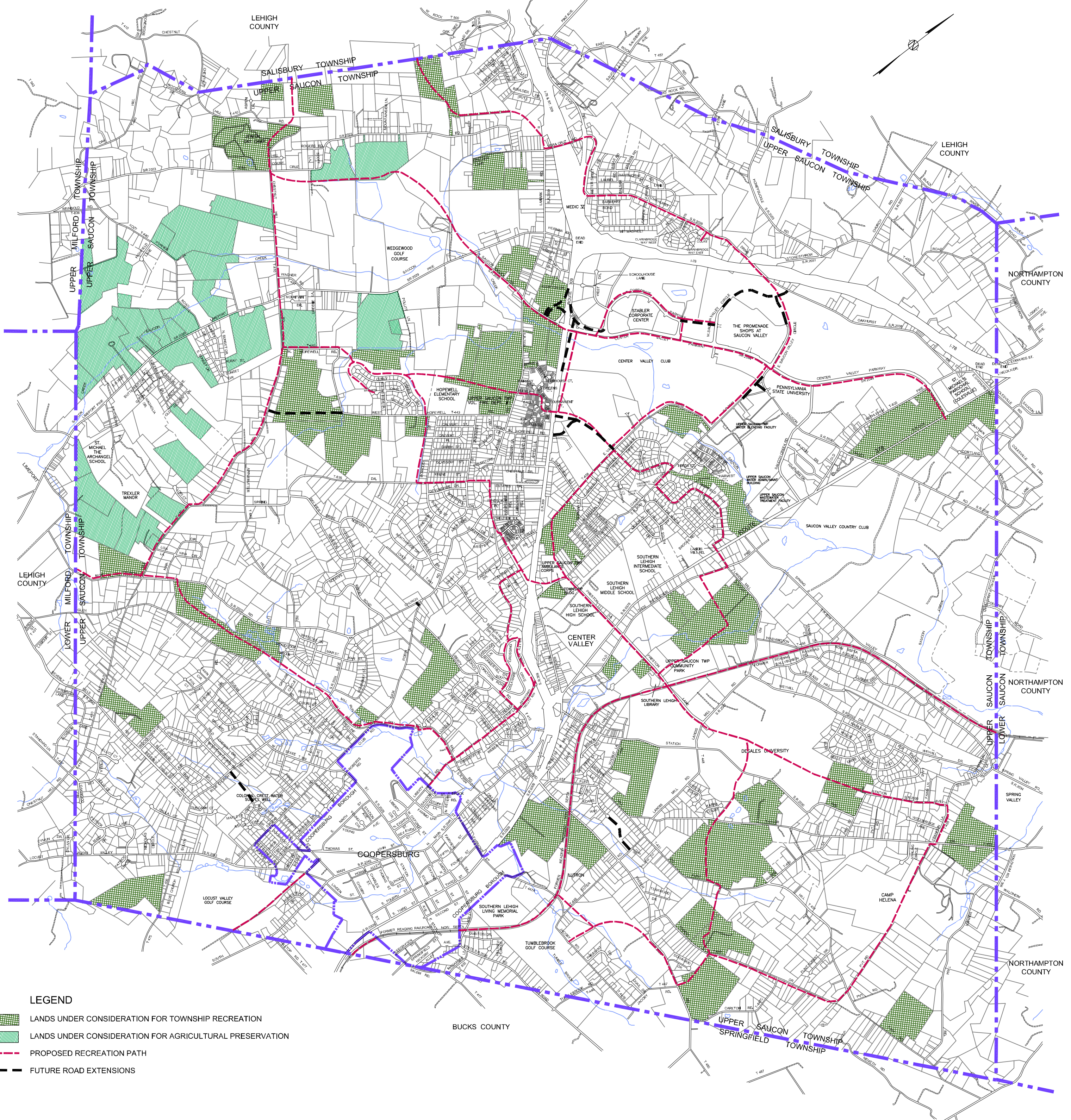
CHAIRMAN _____

SECRETARY _____

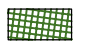





UST-36
SHEET 2 of 3

Drawing name: S:\Upper Saucon Township\Official Map\Official Map - UST-36 3 of 3.dwg Last Modified: Oct 30, 2009 1:12pm



LEGEND

-  LANDS UNDER CONSIDERATION FOR TOWNSHIP RECREATION
-  LANDS UNDER CONSIDERATION FOR AGRICULTURAL PRESERVATION
-  PROPOSED RECREATION PATH
-  FUTURE ROAD EXTENSIONS

NOTES:

1. INFORMATION INCLUDED ON THIS PLAN IS FOR GENERAL REFERENCE ONLY. UPPER SAUCON TOWNSHIP AND THE PIDCOCK COMPANY DO NOT GUARANTEE THE ACCURACY OF THE INFORMATION SHOWN AND RECOMMEND THAT IT BE CHECKED FOR ACCURACY BY THE USER.
2. THE LOCATIONS OF THE PROPOSED RECREATION PATH AND FUTURE ROAD EXTENSIONS ARE CONCEPTUAL ONLY AND FOR PLANNING PURPOSES. ACTUAL LOCATIONS MUST BE IDENTIFIED BY THE TOWNSHIP ON A CASE BY CASE BASIS.
3. BASE PLAN IS MAP FROM KEYSTONE CONSULTING ENGINEERS, INC. DATED 09-28-93.

UPPER SAUCON TOWNSHIP
 LEHIGH COUNTY, PENNSYLVANIA
OFFICIAL MAP - COMPONENT 3

RESERVATION OF PUBLIC GROUNDS
THE PIDCOCK COMPANY
 CIVIL ENGINEERING AND LAND PLANNING ARCHITECTURE LAND SURVEYING
 OXFORD DRIVE AT FISH HATCHERY ROAD
 ALLENTOWN, PENNSYLVANIA

CHAIRMAN _____ SECRETARY _____

THIS IS TO CERTIFY THAT THIS IS THE OFFICIAL MAP OF UPPER SAUCON TOWNSHIP REFERRED TO IN THE OFFICIAL MAP ORDINANCE OF UPPER SAUCON TOWNSHIP, LEHIGH COUNTY, PENNSYLVANIA, ON THE _____ DAY OF _____, 2009

